

# Studio Bikin

Malaysia

**Monterez House**  
Selangor, Malaysia



## Writer

Dinda Ayu Prameswari

## Photographer

Interiors: Gerry Chin

Exteriors: Paul Gadd

**Monterez House is a private residence designed by Studio Bikin as an alteration and addition project of a 12,000 sq.ft (1,115 sq.m) bungalow, located on a steep slope facing an impressive view over a golf course. The previous owners and their architect had noticed the impressive view on the site, and cleverly planned their living room, kitchen, and dining areas on the top floor, while the more private areas, such as the bedrooms and the study room, are placed on the ground floor. This arrangement allows the impressive views to be enjoyed in more public areas and as a form of connection towards the site.**

In the alteration of Monterez House, the architect rearranged the existing rooms so that a more direct circulation is formed. This creates a smooth spatial transition, something that is rarely emphasised in private residential design. According to James F. Eckler in *Language of Space and Form: Generative Term of Architecture*, spatial transitions are the moments when one space becomes another<sup>1</sup>. A transition can be shown as an overlap, when an area can be considered as a portion of two different spaces. A transition can also act as a separation between spaces, or a volume that intercedes the different rooms. Spatial transitions are formed by areas that we consider as transitional, such as thresholds, corridors, stairs, and foyers. With the existence of transitional spaces, people will experience a pause from one space to another .

In Monterez House, the architect removed the existing central stairs that were located in the atrium lobby and relocated it on the existing main entrance. This significant change was done because the architect felt that the existing stairs was blocking the flow of circulation. With this alteration, a spatial transition between the outdoor and indoor space was felt at the time users pass through the main door, since the atmosphere was highly different. The transformation of atmosphere is formed from the differences of room elements, materials used, and colours seen. At the outdoor space, users can perceive a lush atmosphere from the greenery around it. But upon entering the house atrium, a dramatic atmosphere could be felt in the space, formed by its large windows and a concrete skylight that is ornamented as a chandelier. The grey colours of the concrete is a

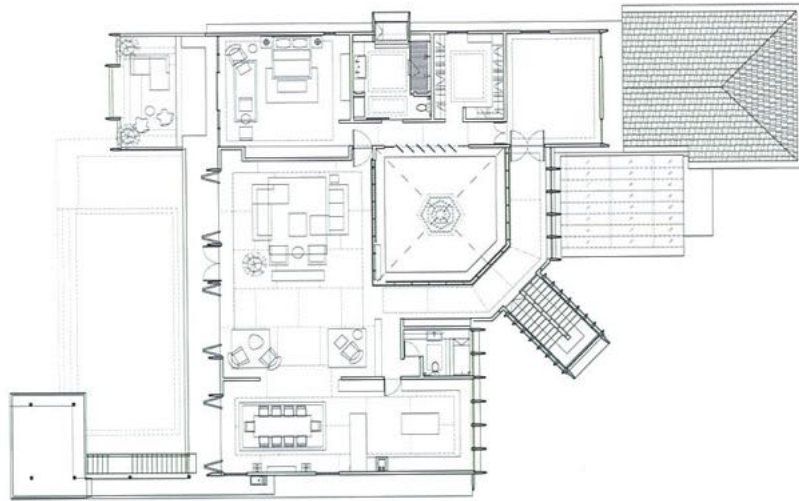
backdrop for light and shadows, enhancing the dramatic atmosphere.

Spatial transition can form a significant transformation of the atmosphere in space, but it can also form a continuous spatial experience. This can be found in the design for the semi-outdoor corridor, which is especially strengthened by the openings. In this transitional semi-outdoor corridor, one side is open, connecting it to the balcony and the gazebo, which is open on all four sides. With the progression of openings, the spatial experience becomes continuous from the corridor to the balcony and gazebo.

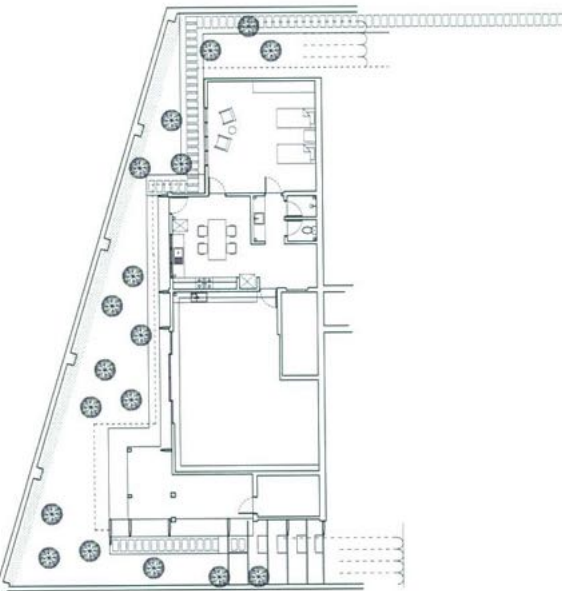
This spatial transition also creates different views in every rooms. These views can be presented continuously or separately, according to the arrangement of rooms. In the upper floor of Monterez House, the surrounding views are served continuously, showcasing the green fields. The transition spaces here are connected to each other, with nothing to block the view. In contrast, the ground floor views are served separately. This is because rooms in the ground floor are private, with dividers to enhance the privacy.

Spatial transitions form pauses in human activity inside spaces. These pauses will change from one space to another. It happens when people are using transition spaces such as corridors and thresholds. The transition is a neutral experience in a relatively short time. In a private house, spatial transition is important because the various experiences of space can be orchestrated and punctuated.

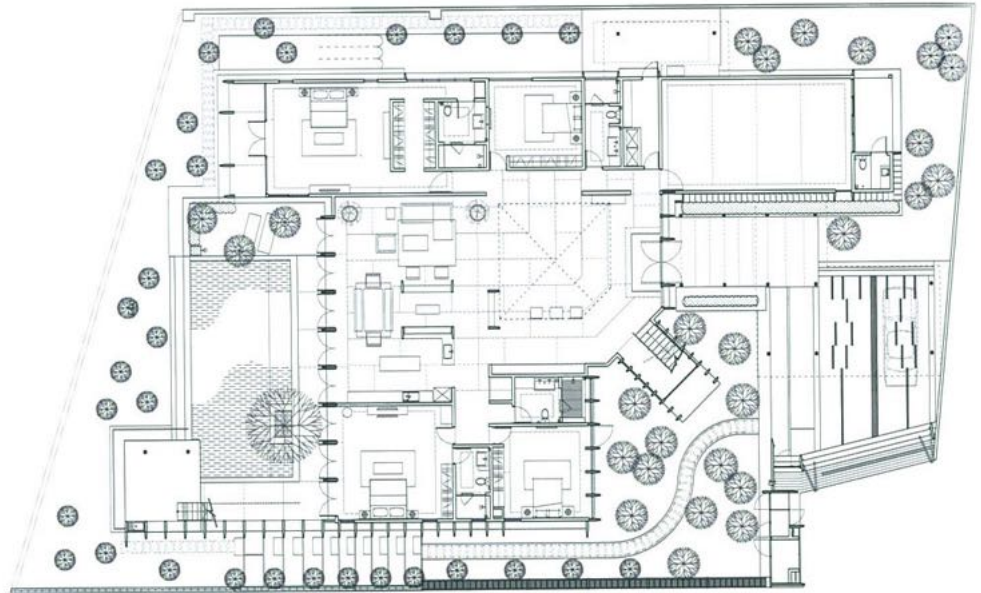
<sup>1</sup>James F. Eckler, *Language of Space and Form: Generative Terms for Architecture* (New Jersey: John Wiley & Sons, 2012), 70.



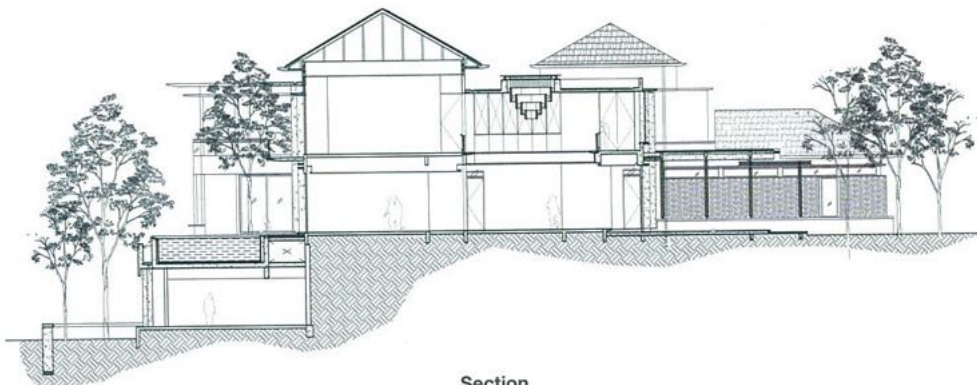
First Floor Plan



Basement Plan



Ground Floor Plan



Section



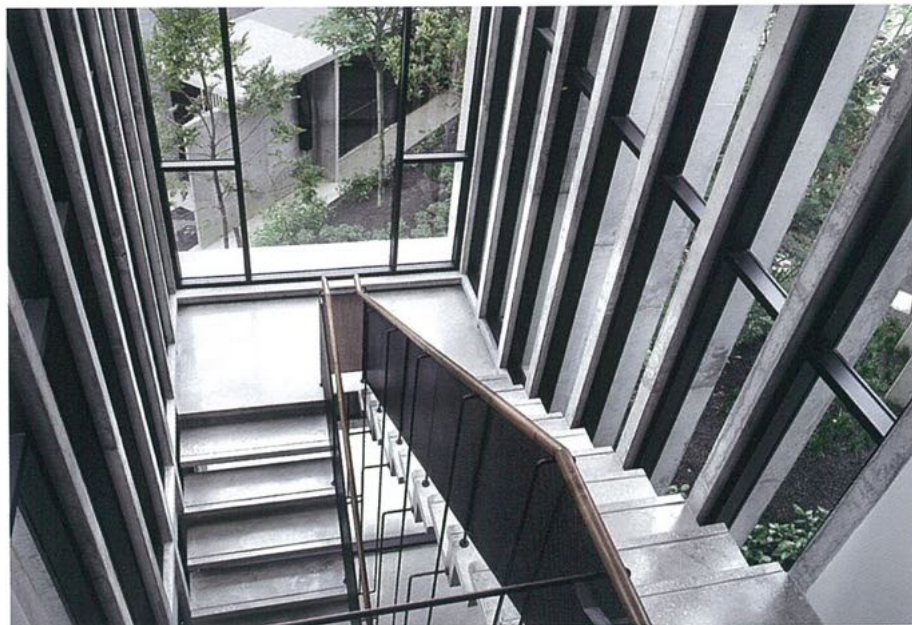
The terrace with its green atmosphere, surrounded by plants.



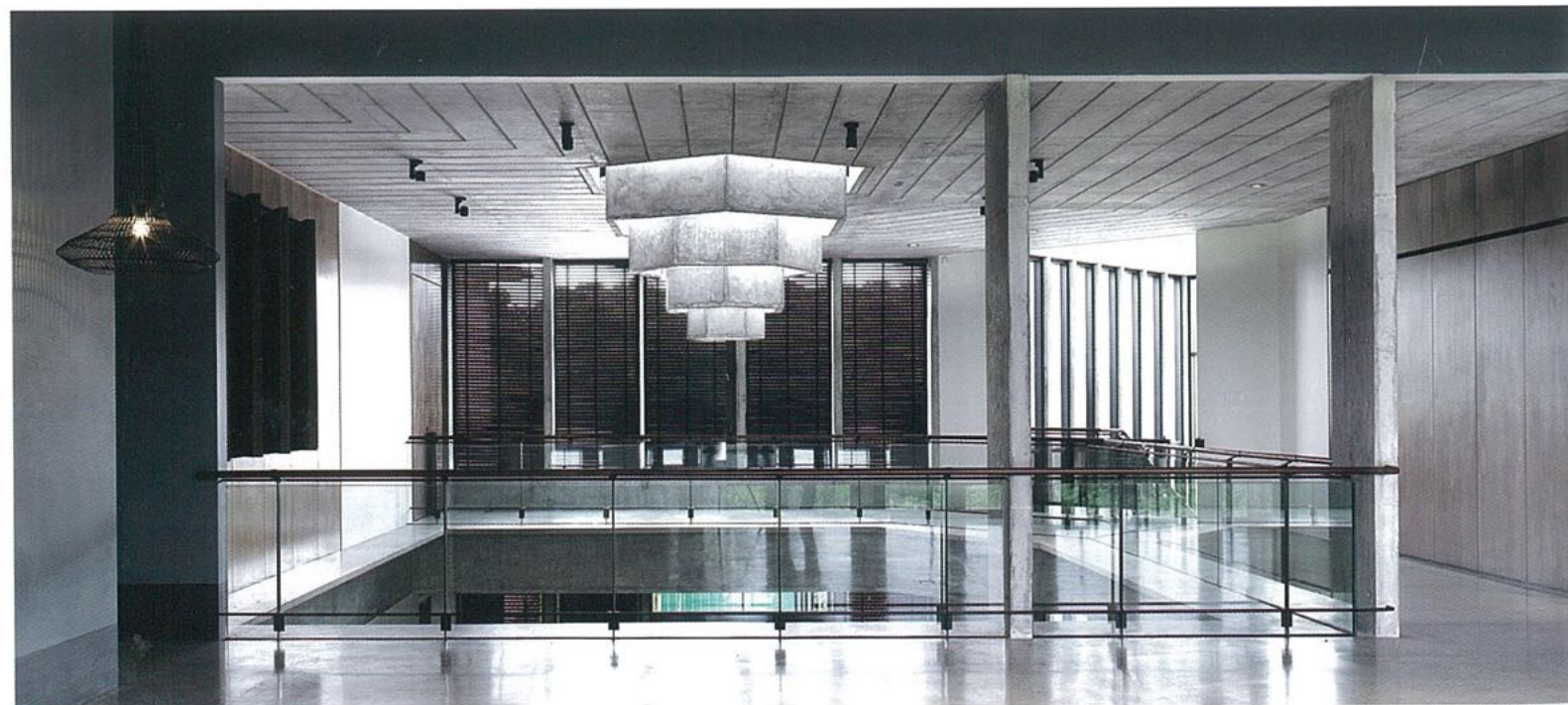
The facade, showing the stairwell with its tall windows that open up to the views.



The main stairs are surrounded by large windows which produce a continuous view.



The foyer in the first floor is surrounded by windows as a transition space to the next areas.



A semi-outdoor corridor connects the balcony on the first floor.



The gazebo is a space with entirely open walls.

#### ARCHITECT PROFILE

Studio Bikin is a multidisciplinary design studio in a constant flux between work and play. The office is founded by Farah Azizan and Adela Askandar in Kuala Lumpur in 2012. The design-led studio practice is established to enable the team to design and execute project with a broad range of typologies. The service of Studio Bikin includes architecture, interior and space planning, landscape architecture, and furniture or product design.

#### DESIGN FIRM

Studio Bikin

#### DESIGN PRINCIPAL

Farah Azizan

#### DESIGN TEAM

Loo Jie Hsin,  
Atikah Idayu Ahmad

#### LOCATION

Monterez Golf Club,  
Shah Alam, Selangor

#### OWNER

Private

#### DESIGN PERIOD

January 2014-  
November 2014

#### CONSTRUCTION PERIOD

November 2014-  
January 2017

#### SITE AREA

14,053 sq.ft

#### FLOOR AREA

12,500 sq.ft

#### INTERIOR DESIGNER

Studio Bikin

#### LANDSCAPE

Studio Bikin

#### CONTRACTOR

CHB Construction Sdn Bhd

#### STRUCTURAL CONTRACTOR

Projurutek Sdn Bhd

#### M&E CONTRACTOR

TCL Great Electrical Sdn  
Bhd

#### PRODUCT SOURCES

##### FLOORING

Polished concrete, terrazzo,  
solid walnut t&g

##### WALLS

Brick

##### PAINT

Murabond / Dulux

##### WATERPROOFING

Sika

##### FACADE FINISHING

Off-form concrete

##### GLASS

Tempered Laminated glass

##### DOORS

Powder-coated alum / mid  
steel & timber

##### WINDOWS

Powder-coated alum

##### CEILING

Plaster ceilings / meranti  
timber strips

##### ROOF

Asphalt roof shingles

##### STAIRS

RC with ms handrails

##### SANITARY

Kohler / Hansgrohe / Toto

A stair connects the ground floor with the first floor in the pool area.

